



GLOBE OVERSEAS PVT. LTD.

TM.4524191

globe
LIFTING EQUIPMENT
SOLUTIONS

MATERIAL HANDLING EQUIPMENT

LET'S MAKE LIFTING SMARTER

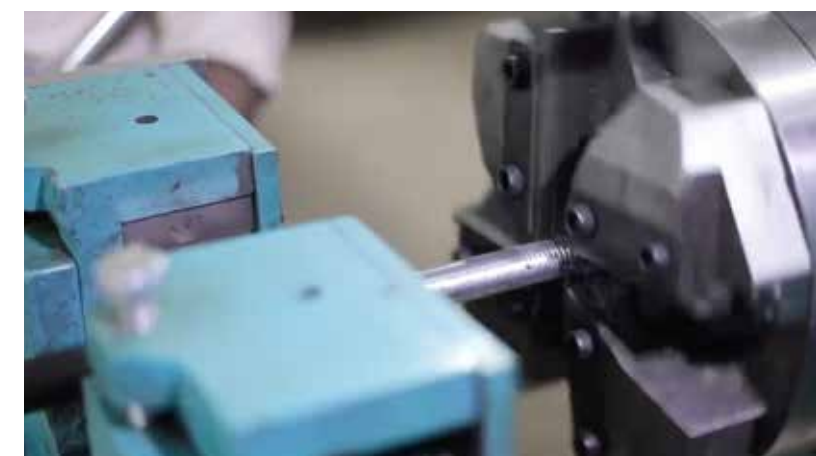
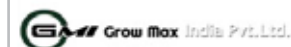
Our Certificates



Our Facilities



Our Clientele

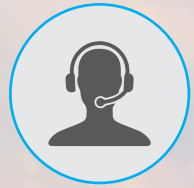


We Build Trust



TO BE INNOVATIVE

Through steady research & development we have achieved international product design and so we are continuously innovating our product range.



TO BE CUSTOMER ORIENTED

Experience of more than 25 years of our professional engineers is put into each product, in response to our customer's refined needs.



FAST DELIVERY SCHEDULE

Globe is equipped with vast efficient production line which is handled by skillful workers.



SAFETY & HIGH STRENGTH

All equipments are designed as per IS safety standards as well as long life robust structural design.



EASY MAINTAINANCE

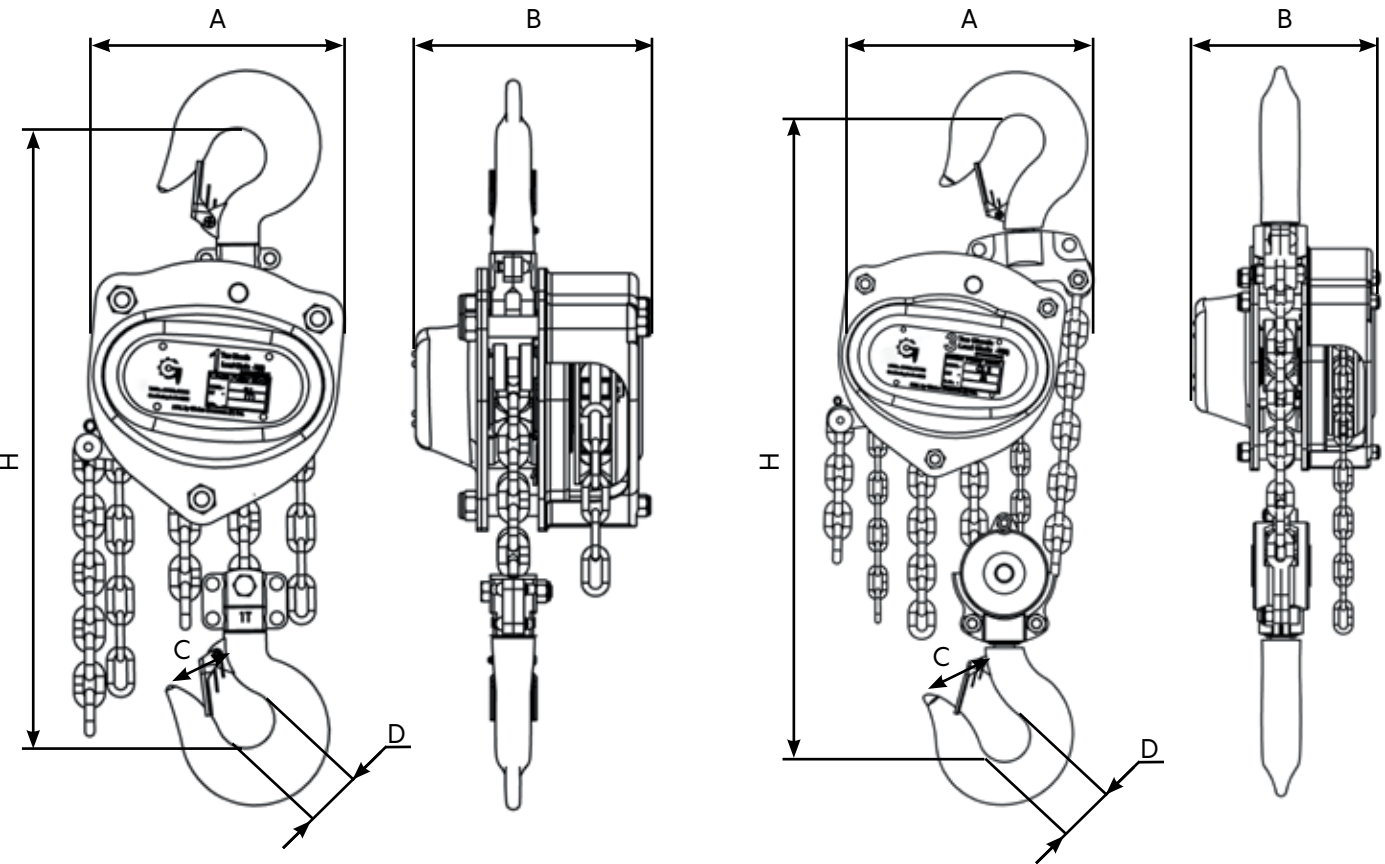
During the design of the equipments, our R&D team always take care of the ease of maintenance & our efficient maintenance team makes it more competitive.



Chain Pulley Block Classic Series



Confirming to IS 3832 : 2005
Model - CL



TECHNICAL SPECIFICATION

CHAIN PULLEY BLOCKS – CLASSIC SERIES							
Model		CL1S	CL2S	CL2D	CL3S	CL3D	CL3F
Capacity	Ton	1	2	3	3	5	10
Standard lifting height	Mtr	3	3	3	3	3	3
Running test load	Ton	1.25	2.5	3.75	3.75	6.25	12.5
Headroom H	mm	410	480	600	580	770	950
No. of fall	-	1	1	2	1	2	4
Chain dia & Pitch	mm	6.3X19	8X24	8X24	10X30	10X30	10X30
Hand effort in (kg)	Kg	25	30	37	37	36	39
Dimension	A	mm	172	220	232	234	292
	B	mm	155	178	178	190	190
	C	mm	27	30	38	38	48
	D	mm	36	38	50	50	63
Packing measurement (LXWXH)		Cm	27x19x17	30x22x18	45x26x23	45X44X36	47X44X36
Net Weight		Kg	13.5	21	29	33.5	39
Extra weight per meter of extra lift		Kg	1.6	2.2	3.0	3.6	5.2
						5.2	9.6

Note :- Due to continuous development and improvement specification listed above may be changed without notice.

Salient Features



- Gr. 80 alloy steel load chain
- Light weight & compact
- Low headroom
- Minimum hand effort.
- Sturdy
- Smooth running & good appearance



LOAD CHAIN SPROCKET

Steel recommended as per IS 3832, ultra fine quality fully pocketed cast steel & precisely machined to suit calibrated load chain & roller bearing for free rotation, reducing effort for lifting. Improved life cycle and smooth running.



HOOK

Heavy duty steel forged compact hook for top& bottom hook assembly with safety latch, capable to withstand shock loads manufactured as per IS 15560-2005.



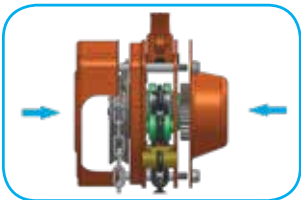
SAFE BRAKING ARRANGEMENT

Self-actuating screw disc type mechanical braking arrangement with non-asbestos based brake disc provides long lasting and high performance.



GEAR SET

Highly efficient, compact and hard wearing gears manufactured from alloy steel, precisely machined and processed.



TRIPLE PROTECTION COVER

Heavy duty steel coated cover protects from atmospheric conditions, external shocks and improves life of complete chain block.



CHAIN GUIDE ROLLER

Double chain guide rollers ensures accurate alignments & smooth movement of load chain.



RATCHET & PAWL ARRANGEMENT

2 Nos. spring loaded heavy duty heat treated pawl enhances the performance and improves safety in all positions.



BEARINGS

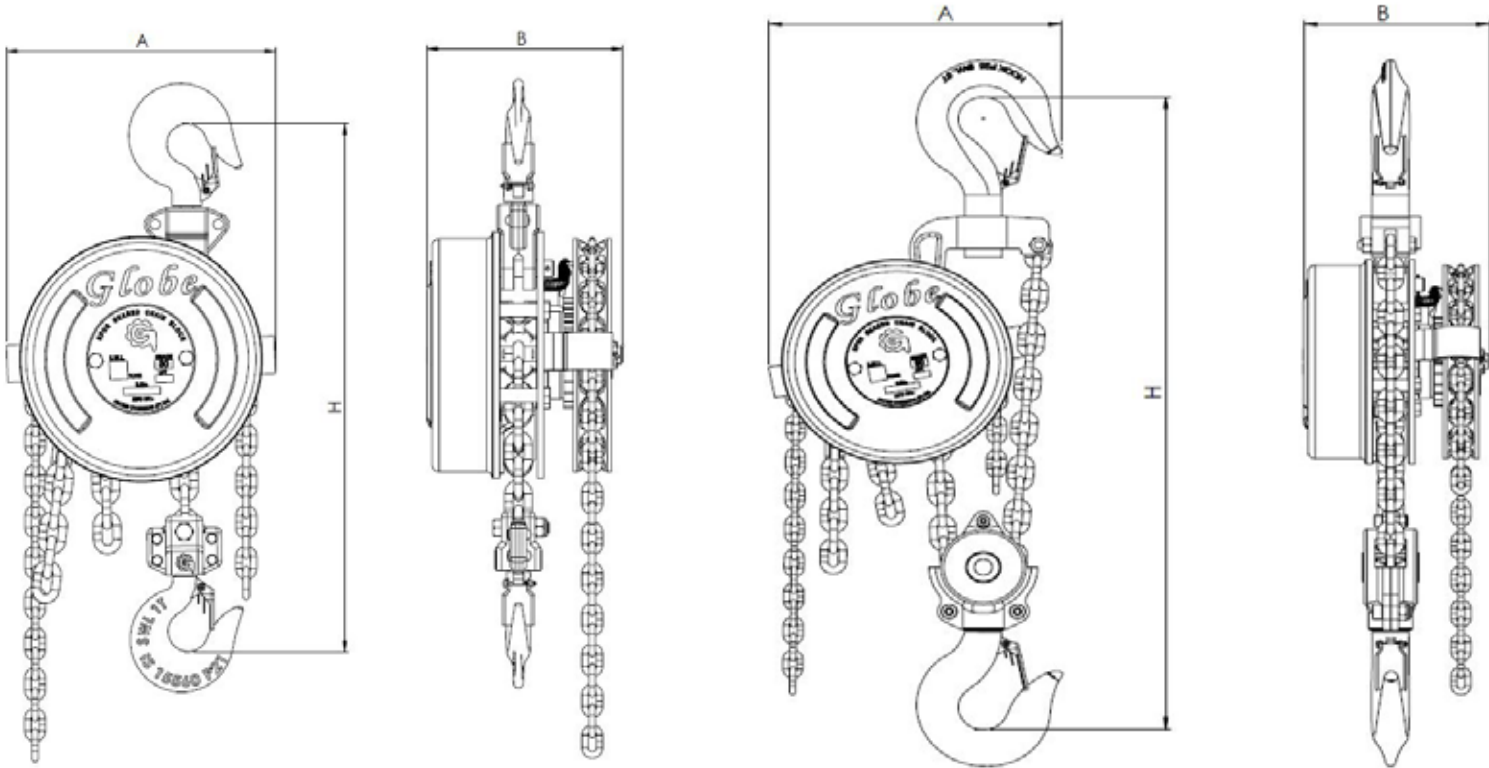
High quality steel housing ball and needle bearings improves efficiency.

Chain Pulley Block

Robo Series



Confirming to IS 3832 : 2005
Model - RB



TECHNICAL SPECIFICATION

CHAIN PULLEY BLOCK — ROBO SERIES										
Model		RB1	RB1	RB1	RB2	RB2	RB2	RB2	RB3	RB3
Capacity	Ton	1	2	3	5	7.5	10	15	20	25
Standard Lifting Height	Mtr	3	3	3	3	3	3	3	3	3
Headroom H	mm	495	515	720	850	960	980	1250	1300	1450
Load Chain Ø & Pitch	mm	8x24	8x24	8x24	10X30	10X30	10X30	10X30	12X33.5	12X33.5
No. of Falls	-	1	1	2	2	3	4	5	6	6
Hand Effort in	kg	35	40	45	40	40	52	80	85	95
Dimension	A	mm	255	255	290	345	415	425	600	1220
	B	mm	185	185	185	220	220	220	-	-
Velocity Ratio App.	-	50.5	50.5	102	280	216	298	430	592	740
Net Weight	kg	26	27	35	61	82	106	176	266	280
Extra Weight/ Mtr. Lift	kg	2.9	2.9	4.3	5.7	8.5	10.6	20.1	27.8	27.8

Note :- Due to continuous development and improvement specification listed above may be changed without notice.

Salient Features



- Once installed works years together
- Negligible maintenance cost
- Longer life
- Easy to handle
- Low cost
- Quick dependable lifting

9 IMPORTANT FEATURES OF GLOBE "ROBO" SERIES CHAIN BLOCKS.

LIFTING HOOKS

Heavy duty steel forged hooks, capable to withstand shock loads. Free to swivel & rotate, design as per IS 15560.

BASE FRAME

Robust & long life designed structure, which ensures the safety on safe loads and overloaded conditions. Moreover it is more sustainable in hazardous conditions also.

LOAD CHAIN SPROCKET

Steel casted & hardened, designed to adjust precisely of load chain which ensure increased and long life of chain & Load chain Sprockets resulting minimum wear of parts.

GEARS

Gear Box is the heart of Chain blocks, hence material selection, all manufacturing processes of gears are done very precisely. All gears and pinions are Case hardened as per IS Standards.

BRAKING ARRANGEMENT

Self actuating screw disc type ensures full safety. Steel forged pawl, hardened ratchet Gears

HAND CHAIN WHEEL

Heavy duty & large diameter of hand wheel gives smooth and effortless lifting.

LOAD CHAIN

Grade 80, alloy steel load chain as per IS Standards electrically resistance welded, heat treated, tested & Calibrated.

BRAKE DISC

Asbestos free long lasting, minimum wear & more gripping ability

LOAD CHAIN GUIDE

It ensures to facilitate smooth & twist free movement of load chain.



Monorail Travelling Trolley

Geared Type

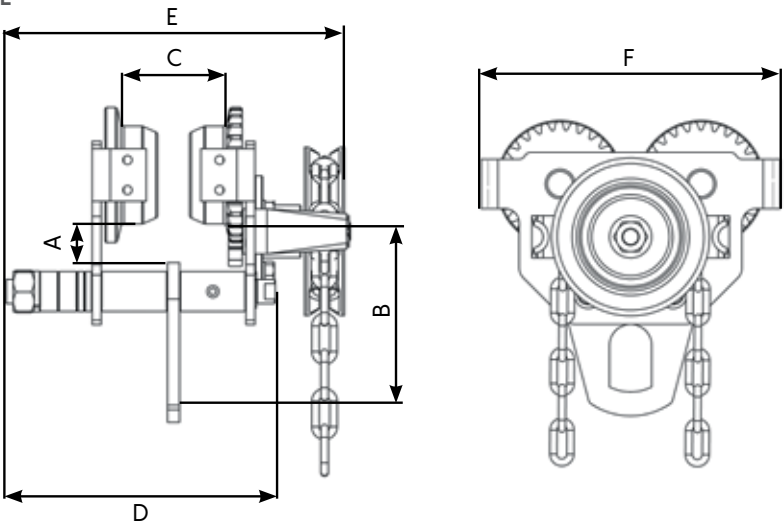


Push Pull Type

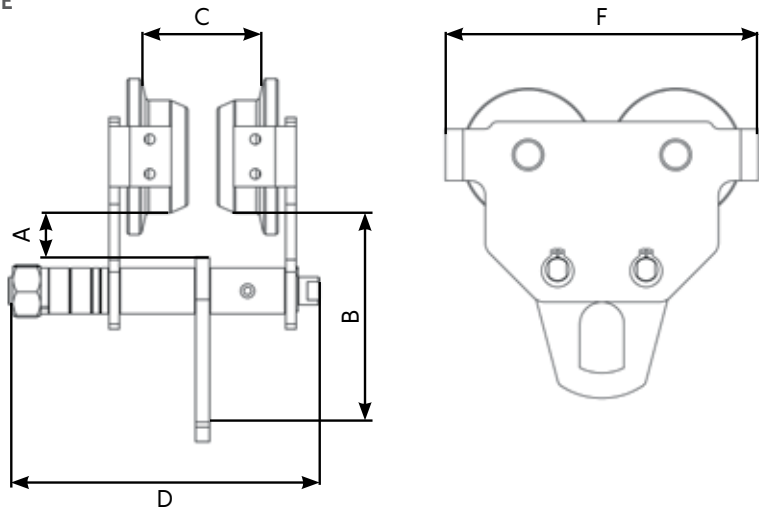
Confirming to IS - 807 & 3177



• GEARED TYPE



• PUSH PULL TYPE



TECHNICAL SPECIFICATION

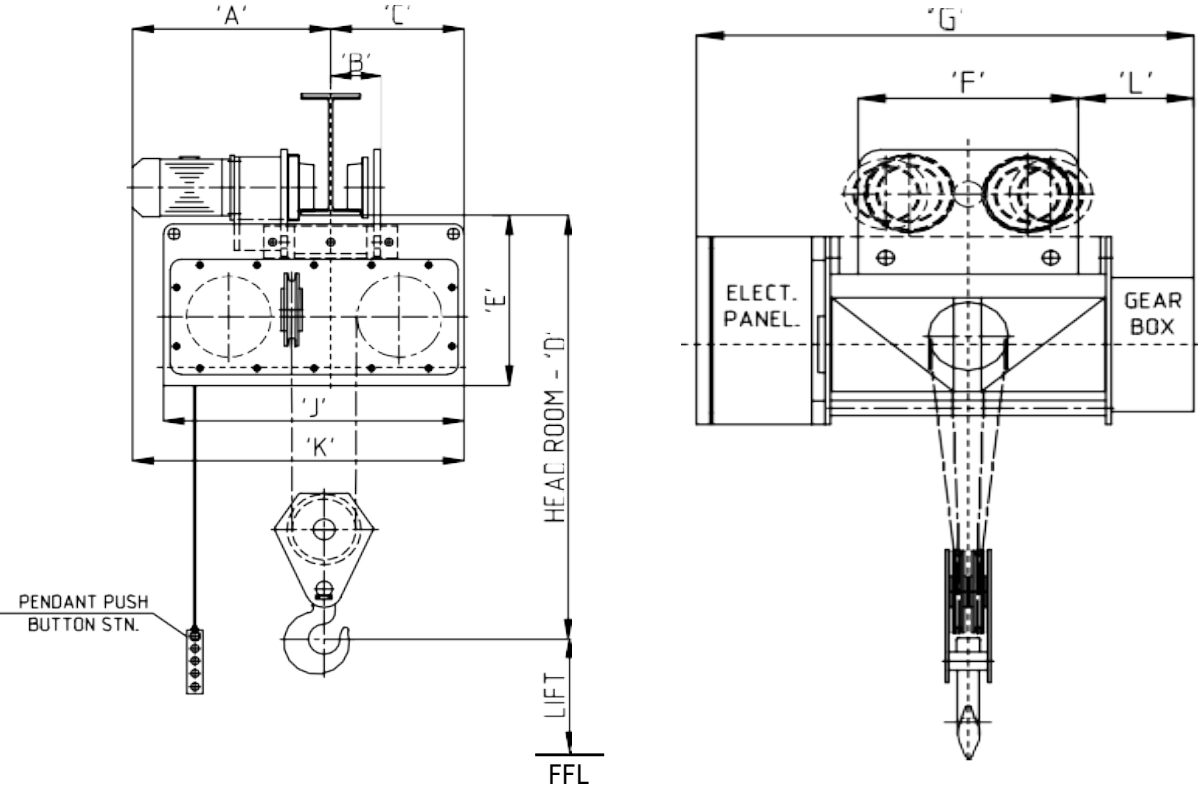
MONORAIL TRAVELLING TROLLEY										
		GEARED TYPE					PUSH PULL TYPE			
Model		GBT1	GBT2	GBT3	GBT5	GBT10	PPT1	PPT2	PPT3	PPT5
Capacity	Ton	1	2	3	5	10	1	2	3	5
Standard lifting height	Mtr	3	3	3	3	3	-	-	-	-
I-Beam recommended	mm	65-125	75-140	100-150	125-180	140-210	65-125	75-140	100-150	125-180
Dimension A	mm	24	27	31	30	28	24	27	31	30
Dimension B	mm	115	132	166	192	264	115	132	166	192
Dimension C	mm	60	80	104	130	147	60	80	104	130
Dimension D	mm	200	227	252	295	345	200	227	252	295
Dimension E	mm	258	284	308	350	407	-	-	-	-
Dimension F	mm	220	250	292	321	504	220	250	292	321
Packing measurement (LXWXH)	cm	28X25X23	30X28X25	32X32X28	36X35X30	36X35X30	53X43X41	25X23X17	29X25X20	32X30X30
Net weight with 3m lift	kg	13	19	27	39	94	9	14	22	33
Extra weight per meter of extra lift	kg	0.9	0.9	0.9	0.9	0.9	-	-	-	-
Hand Chain (φXpitch)	mm	5X22.5	5X22.5	5X22.5	5X22.5	5X22.5	-	-	-	-
Radius of curvature	mm	2000	2000	1500	1500	1500	2000	2000	1500	1500

Note :- Due to continuous development and improvement specification listed above may be changed without notice.

Electric Wire Rope Hoist



Confirming to IS 3938
Model - M Series



TECHNICAL SPECIFICATION

ELECTRIC WIRE ROPE HOIST WITH ELECTRIC TROLLEY											
Model		GWRH M0-62	GWRH M1-82	GWRH M1-84	GWRH M2-102	GWRH M2-104	GWRH M2-124	GWRH M3-124	GWRH M3-144	GWRH M4-164	GWRH M4-204
Rated Load	Ton	0.5	1	2	2	3	5	5	7.5	10	15
Lift	Mtr	5	6	6	6	6	6	6	6	6	6
Hoisting speed	mpm	6	6	3	4	3	3	3	3	3	3
Hoisting motor	H.P	1	2	2	3	3	5	5	7.5	10	15
Traversing speed	mpm	15	15	15	15	15	15	15	15	15	15
Traversing Motor	H.P	0.25	0.5	0.5	0.5	0.5	1	1	1	1	1.5
Motor Specifications	40 % CDF, 150 Starts/Hr, 50 Hz, 415V, 3 Phase, AC, Squirrel cage Induction Motor, IE2.										
No. of falls	-	2	2	4	2	4	4	4	4	4	4
Rope Diameter	mm	6	8	8	10	10	12	12	14	16	20
Rope Construction	6 x 36 / 37, Fibre Core (FMC) /1770 N/MM Sq., Ungalvanised, Breaking Strength - 40KN.										
Approx. Weight	kg	160	216	240	400	460	540	800	900	1200	1400
Approx. Dimensions	A	mm	385	425	425	480	480	480	-	-	-
	B	mm	115	125	125	150	150	150	-	-	-
	C	mm	200	290	300	360	360	360	415	415	500
	D	mm	700	750	920	950	1000	1100	1200	1250	1400
	E	mm	300	380	380	460	460	460	585	585	655
	F	mm	300	380	380	400	400	400	580	580	580
	G	mm	720	830	1050	1040	1040	1040	1090	1090	1200
	H	mm	265	260	260	375	375	375	280	280	315
	I	mm	6000	6000	6000	6000	6000	6000	6000	6000	6000
	J	mm	390	530	530	720	720	720	830	830	1000
	K	mm	600	740	750	840	840	840	-	-	-
Recommended ISMB Sizes	mm	150 x 75 to 200 x 100			200 x 100 to 350 x 140		250 x 125 to 450 x 150		300 x 140 to 600 x210		

Note :- Due to continuous development and improvement specification listed above may be changed without notice.

Salient Features



DESIGN

"Globe" Electric Wire Rope Hoists are designed as per IS 3938 - 1983 (R2012) and are suitable for Medium & Heavy duty applications. We also do customizations in hoists as per Customer Requirements.

CONSTRUCTION

"GLOBE" hoist have a unique modular construction which makes them an ideal choice since each sub assembly is easily accessible individually, thus reducing the time and cost involved in the maintenance.

STRUCTURE

Years of Experience for different applications enabled "Globe" to produce heavy duty / robust structure which ensures long life & safety of the user, material & machinery.

ROPE DRUM

Rope drums are fabricated with seamless tubes having flanges at both ends. Each drum is precisely machined and grooved suitably for specified wire ropes. Ropes guiding arrangements ensures & protect overlapping of wire rope & winds full length of rope in one layer.

GEAR BOX

Totally enclosed, immersed oil bath lubricated Gearbox, fitted with heavy duty precision cut helical Gears and Pinions with alloy Steel material.

HOOK

Conforming to IS: 15560 Free to rotate & swivel.

BRAKE

Instant action 'fail to safe' Electromagnetic DC disc type, ensures maximum safety and reliability in operation.

LIMIT SWITCH

Snap action limits switch to prevent over hoisting and over lowering is provided for maximum safety.

CONTROL

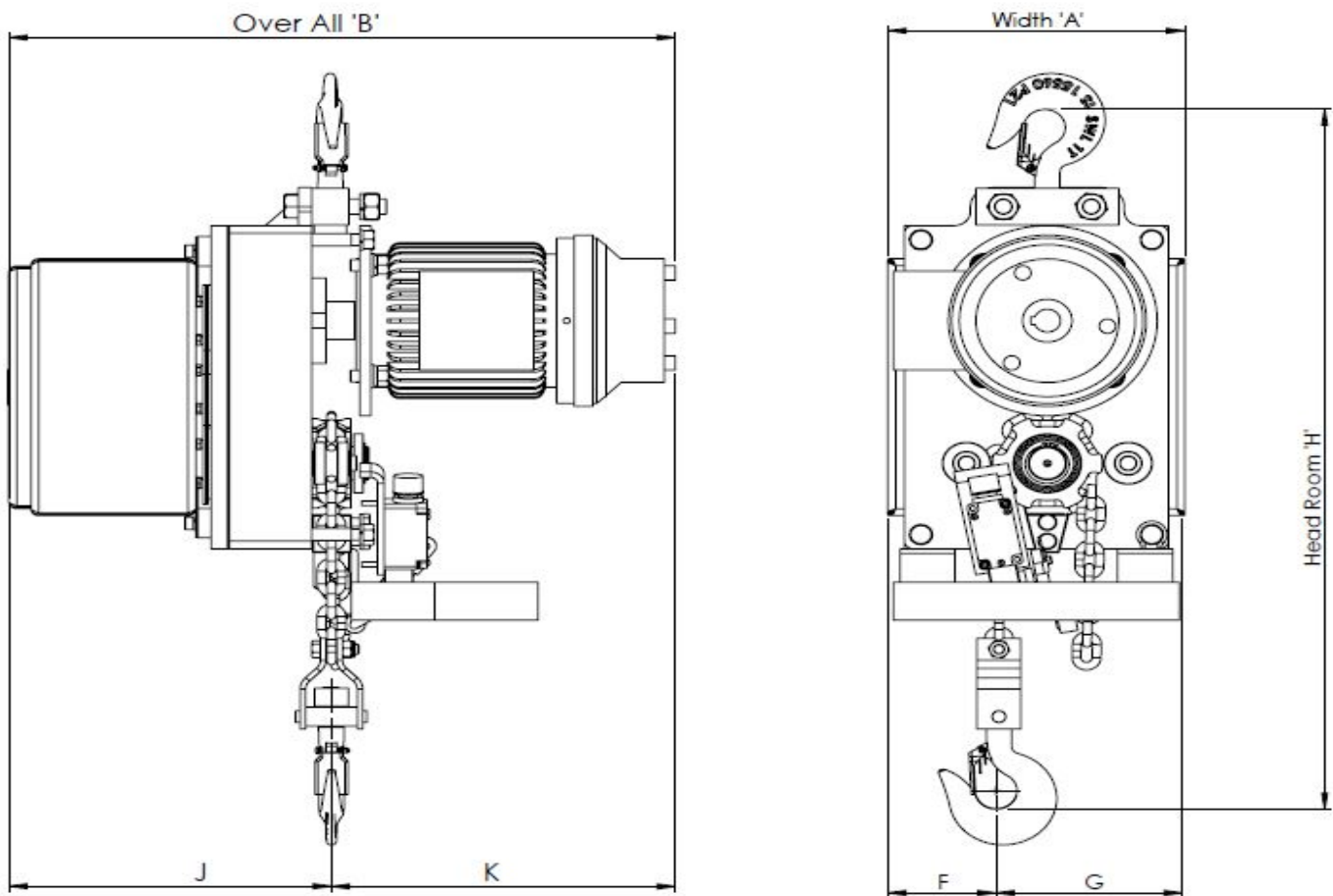
From push button pendent station supported with steel wire rope, operating at 110 volt from ground level.



Electric Chain Hoist



Confirming to IS - 6547
Model 'MC' Series



TECHNICAL SPECIFICATION

ELECTRIC CHAIN HOIST					
MODEL		GCH MC1-81	GCH MC1-82	GCH MC2-102	GCH MC2-102
CAPACITY	Ton	1T	2T	3T	5T
HEIGHT OF LIFT	Mtr	3	3	3	3
MAIN HOISTING SPEED	mpm	6	3	3	3
MAIN HOISTING MOTOR	H.P	2	2	3	5
LOAD CHAIN / FALL	mm	1 / 8	2 / 8	2 / 10	2 / 10
CROSS TRAVEL SPEED	mpm	15	15	15	15
CROSS TRAVEL MOTOR	H.P	0.5	0.5	0.5	1
Width 'A'	mm	270	270	302	357
Overall 'B'	mm	607	607	681	741
Head Room 'H'	mm	735	800	910	1070
Dimension 'F'	mm	99	68	68	103
Dimension 'G'	mm	170	203	235	256
Dimension 'J'	mm	294	293	316	330
Dimension 'K'	mm	313	313	365	411

Note :- Due to continuous development and improvement specification listed above may be changed without notice.

Salient Features



DESIGN

"GLOBE" Electric Chain Hoist are designed as per IS: 6547 and are suitable for Medium & Heavy duty applications.

CONSTRUCTION

"GLOBE" Hoist have a unique modular construction which makes them an ideal choice since each sub assembly is easily accessible individually, thus reducing the time and cost involved in the maintenance.

FRAME

The Frame is of sturdy design, fabricated from tested steel plates and is welded/bolted type.

GEAR BOX

Totally enclosed, gear box with gears made from EN-9/EN- 24, steel and teathed on precision hobbing machines, hardened & tempered. The gears are lubricated with high viscosity grease and need no further lubrication.

ELECTRIC MOTORS

3 PH. 440 Volt, A. C. 50 cycles, Squirrel cage Induction motors normally of BBL/ABB/CGL make is used.

LOAD CHAIN

Confirming to IS : 6216-1971, Grade 80, tested, calibrated and duly heat treated.

BRAKE

Instant action 'Fail to Safe' Electro Magnetic Disc brakes are incorporated to ensure maximum safety and reliability in operation.

LIMIT SWITCH

Snap Action limits switches are used to prevent over hoisting and over lowering.

CONTROL PANNEL

Totally enclosed, dust and moisture proof panel housing with components of standard makes like 'SIEMENS/L&T, BCH' telemecanique etc., provided control at low voltage for safety of operator.

HOOKS

Steel Forge confirming to IS : 15560-2005. Free to rotate & swivel.

TEST

Each Hoist is tested to 25% Overload with confirmation to IS : 6547-1971.



Electric Winch

Confirming to IS- 9507-1979 (R2006)



TECHNICAL SPECIFICATION

ELECTRIC WINCH					
Capacity In Ton	Gear Box	Rope Speed Mtr./Min.	Winding Capacity / No. Of Layer	Motor H.P	Rope Dia (Mm) Suggested
1 TON	WORM	6	90 Mtr./4LYR	2	10
1 TON	WORM	6	140 Mtr./4LYR	3	10
1 TON	WORM	9	90 Mtr./4LYR	3	10
1 TON	WORM	9	140 Mtr./4LYR	3	10
1 TON	WORM	12	90 Mtr./4LYR	5	10
1 TON	WORM	12	140 Mtr./4LYR	5	10
2 TON	WORM	6	90 Mtr./4LYR	5	12
2 TON	WORM	6	140 Mtr./4LYR	5	12
2 TON	WORM	9	90 Mtr./4LYR	7.5	12
2 TON	WORM	9	140 Mtr./4LYR	7.5	12
2 TON	WORM	12	90 Mtr./4LYR	10	12
2 TON	WORM	12	140 Mtr./4LYR	10	12
3 TON	WORM	6	100 Mtr./4LYR	7.5	16
3 TON	WORM	6	200 Mtr./4LYR	7.5	16
3 TON	WORM	9	100 Mtr./4LYR	10	16
3 TON	WORM	9	200 Mtr./4LYR	10	16
3 TON	WORM	12	100 Mtr./4LYR	12.5	16
3 TON	WORM	12	200 Mtr./4LYR	12.5	16
5 TON	WORM	6	100 Mtr./4LYR	10	22
5 TON	WORM	6	100 Mtr./4LYR	10	22
5 TON	WORM	7.5	200 Mtr./4LYR	12.5	22
5 TON	WORM	7.5	200 Mtr./4LYR	12.5	22
5 TON	WORM	9	100 Mtr./4LYR	15	22
5 TON	WORM	9	200 Mtr./4LYR	15	22
7.5 TON	HELICAL	5	100 Mtr./5LYR	12.5	22
7.5 TON	HELICAL	5	200 Mtr./5LYR	12.5	22
10 TON	HELICAL	4.5	100 Mtr./5LYR	15	30
10 TON	HELICAL	4.5	200 Mtr./5LYR	15	30
15 TON	HELICAL	4.5	100 Mtr./5LYR	20	40
15 TON	HELICAL	4.5	200 Mtr./5LYR	20	40

Note :- Due to continuous development and improvement specification listed above may be changed without notice.

Salient Features



DESIGN

"Globe" Electric Winch Machines are designed as per IS: 9507-1979 (Reconfirmed 2006) and are suitable for Medium & Heavy duty applications.

CONSTRUCTION

"GLOBE" Winches have a unique modular construction which makes them an ideal choice since each sub assembly is easily accessible individually, thus reducing the time and cost involved in the maintenance.

FRAME

The Structural Base Frame is of sturdy design, fabricated from tested steel plates and is welded/bolted type.

GEAR BOX

Totally enclosed Worm/ Helical Type with suitable open Reductions as per speed requirement. All gear are Precision hob machined & are lubricated with high Quality Gear Oil.

ELECTRIC MOTORS

3 Phase, 415 Volt, 50Hz , AC , S1/S4 Duty, Squirrel cage induction motors. Make- BBL/ CGL/ ABB are used.

BRAKE

Electro magnetic Disc / Shoe or Electro Hydraulic thruster shoe type Brake as provided as per required Torque.

LIMIT SWITCHES

Rotary Geared type limit switches to Prevent over travel in both Directions reverse & forward, motion.

CONTROL PANEL

Totally enclosed, dust & moisture proof Panel Housing, IP 55 Protected, housed with Heavy duty Contactors & Safety Components for Safe operation.

Make of Components — Schneider electric / ABB / L&T / Siemens

SAFETY GUARDS

All open Reduction Gear are covered with Safety Guard to avoid any kind of Mishap, Specially for Machine operator.

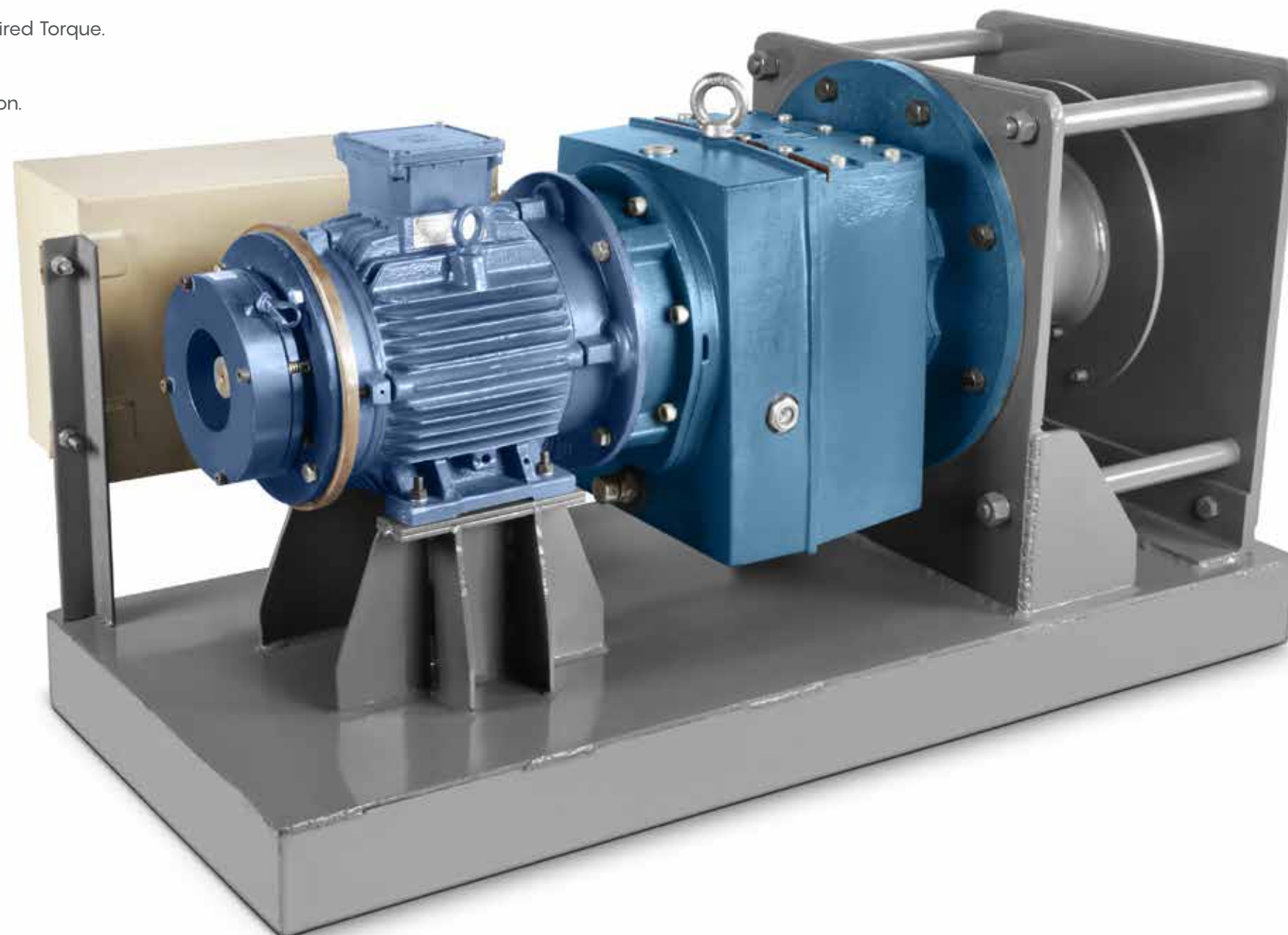
Test : All machines are tested to 25% over load as per relevant IS Standard.

OPTIONAL ACCESSORIES

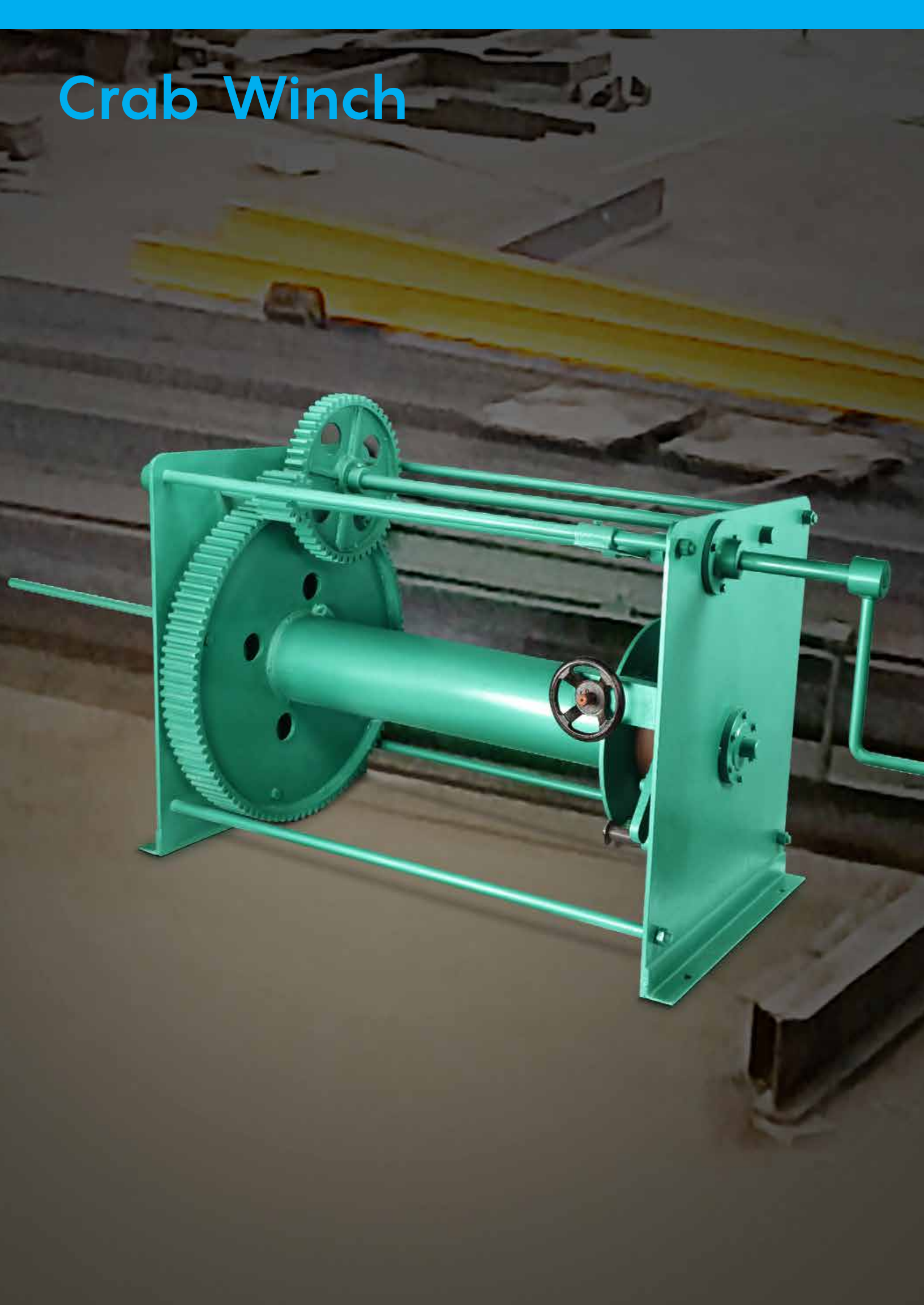
- Wire Rope
- Eye Hook
- VFD Panel

ADDITIONAL FEATURES / ADVANTAGES

- Multifunctional and can be manufactured at higher capacities also.
- Long Distance pulling can be done.
- High-speed winches can reduce travel time.
- Low Maintenance
- Spares are easily available all around.
- Dual Braking makes the operation safer.
- Winches can be designed with helical and worm Gear boxes.
- Multiple Layering of rope can be done with rope winch guiding arrangement.



Crab Winch



Confirming to IS – 5112



Salient Features

APPLICATION

“GLOBE” manual Crab Winches are used for Pulling Heavy loads, Lifting Application, Erection of pillars and poles, Tensioning of electric Power Line Towers, Dam Gate Lifting, cable pulling etc.

STRUCTURE

Complete structure is fabricated from Tested steel as per IS 2062.

REDUCTION GEARS

2 & 3 Stage Gear train reduces hand effort for heavy loads as per capacity, which makes the machine more users friendly. Heavy Duty Fabricated, Precisely turned and Hob cut gears are used mounted on Ball bearings.

DUAL SPEED

This is a special feature of our winch machine, all standard machines have dual speed for free and loaded conditions which help user to minimize working time and improves efficiency.

ROPE DRUM

Fabricated Plane Drums having flanges at both ends and are designed to withstand the compressive stresses caused by the wound of rope when the drum is wound. Drum diameter and lengths are designed as per Rope Size & winding capacity/standard in multi layers.

DUAL BRAKING

Each winch is provided with twin braking arrangement which makes our winches fail safe.

1st Brake — Ratchet & Pawl arrangement

2nd Brake — manual Drum shoe brake

Each brake is suitable to sustain full load capacity.

OPERATING HANDLES

Heavy duty with suitable required length of operating handles is provided on both sides of driving shaft which helps to distribute load equally.

TEST

All operational and safety tests are carried out at our works prior to dispatch as per relevant IS Standard.

FOUNDATION & BASE FRAME

Suitable holes are provided to accommodate foundation or anchor bolts.

TECHNICAL SPECIFICATION

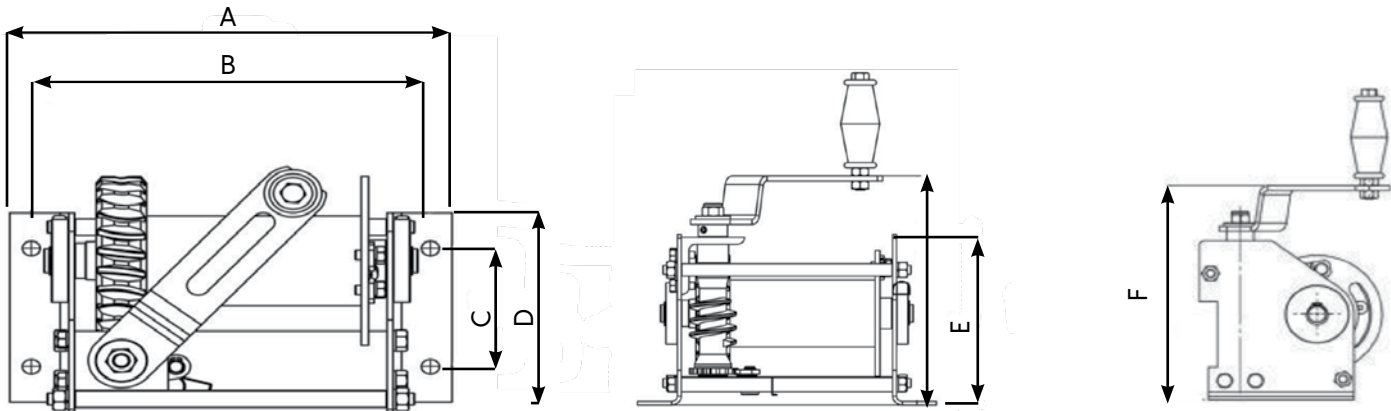
CRAB WINCH								
Capacity in	Ton	1	2	3	5	10	15	20
Winding Cap.	Mtr.	100	100	125	125	165	200	250
Suggested Wire Rope	mm	Ø8	Ø10	Ø14	Ø20	Ø28	Ø36	Ø40
Drum Dia	mm	160	160	215	215	270	355	400
Drum length	mm	300	400	500	560	800	1000	1200
Flange Dia	mm	285	380	400	500	600	750	900
Height A	mm	490	610	730	960	1140	1440	1700
Height B	mm	360	480	530	680	965	1140	1300
Height C	mm	600	750	900	980	1300	1700	1900

Note :- Due to continuous development and improvement specification listed above may be changed without notice.

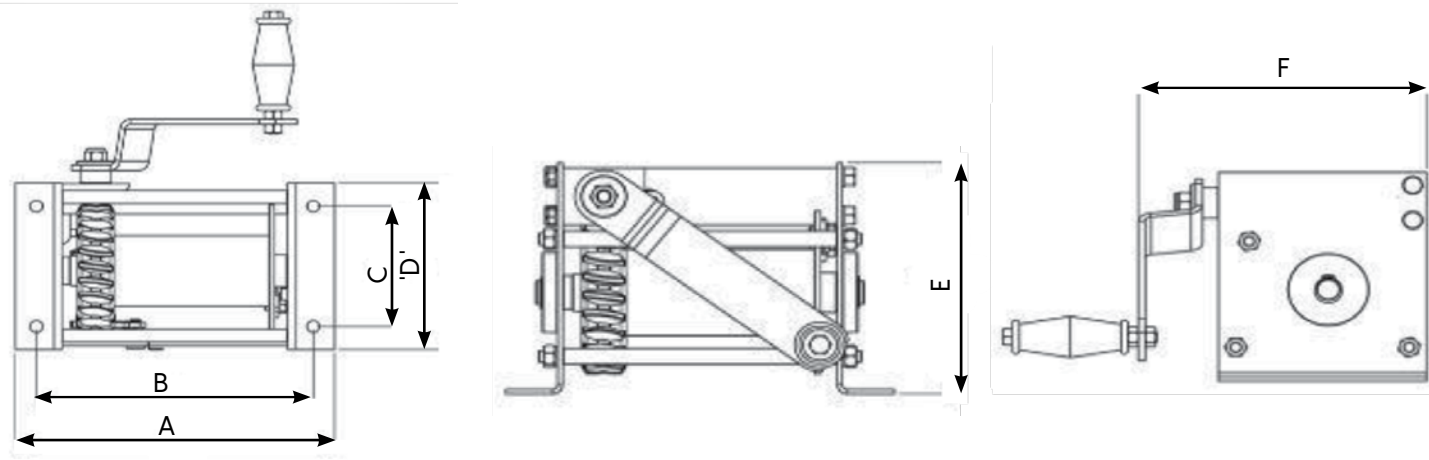
Worm Gear Hand Winch



• WALL MOUNTED TYPE



• FOOT MOUNTED TYPE



TECHNICAL SPECIFICATION

WORM GEAR HAND WINCH (FOOT / WALL MOUNTED)				
Model		HWW1/HWF1	HWW2/HWF2	HWW3/HWF3
Capacity	Ton	0.5	1	1.5
Hand Effort	kg	9	15	21
Dimension A	mm	307	352	382
Dimension B	mm	277	320.5	350.5
Dimension C	mm	102.5	133	167
Dimension D	mm	162.5	183	230
Dimension E	mm	193	213	280
Dimension F	mm	259	280	350
Wire Dia	mm	6	8	12
Drum Winding capacity	mm	40	30	30
Net weight	kg	11.5	17	25

Note :- Due to continuous development and improvement specification listed above may be changed without notice.

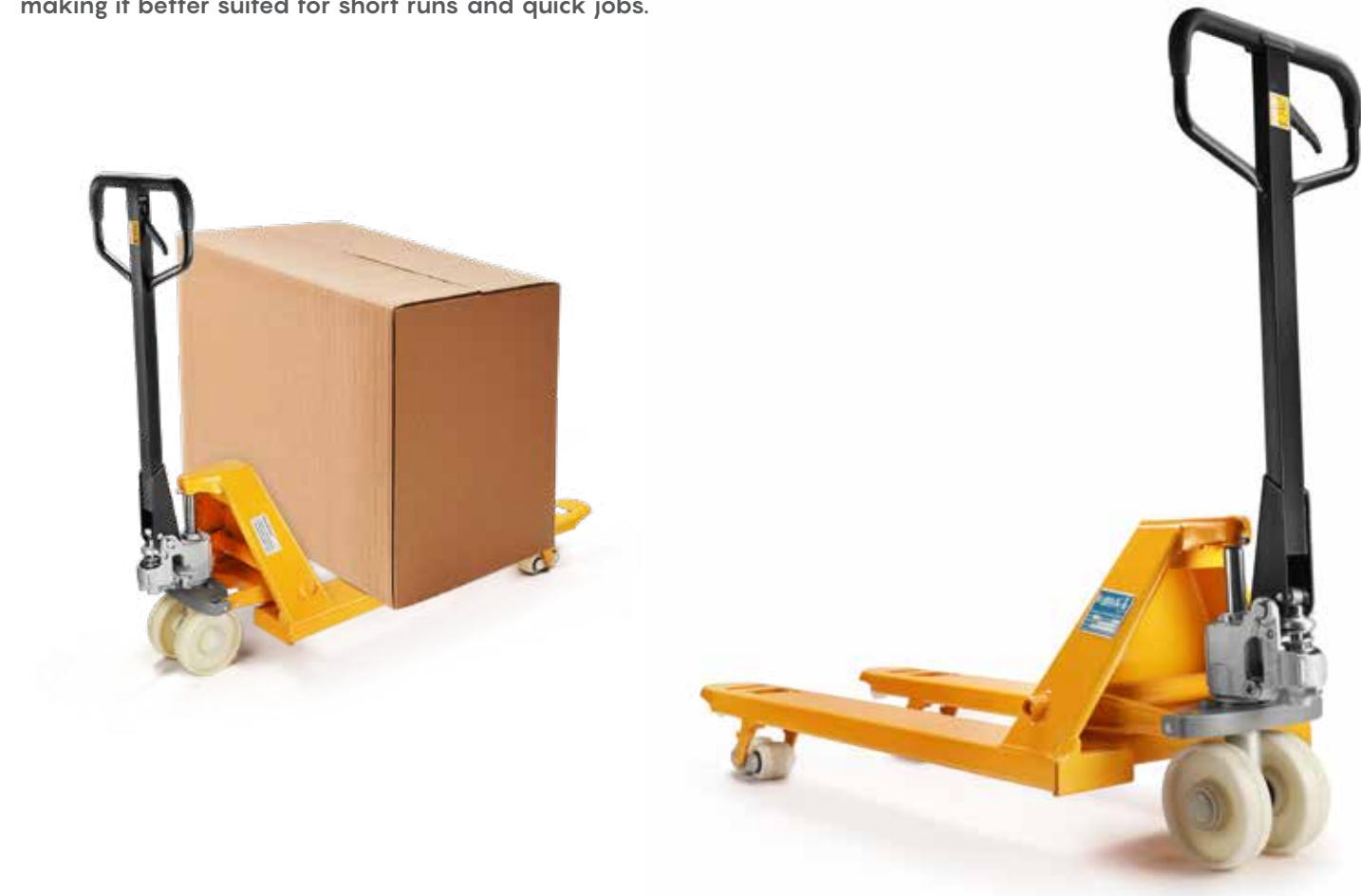
Hydraulic Pallet Truck



Confirming to IS - 5007



- Pallet trucks enable workers to move full pallets of materials and products simply.
- Manual pallet trucks are employed for typical application, while high volume warehouse use typically calls for pallet trucks.
- The pallet jack inserts the fork carried by it into the hole of the tray during use, and the pallet jack is driven by the human to realize the lifting and lowering of the pallet cargo.
- It is ideal for retail, cold storage, and general warehousing industries.
- When hauling heavier loads there is increased exertion from the operator, making it better suited for short runs and quick jobs.



TECHNICAL SPECIFICATION

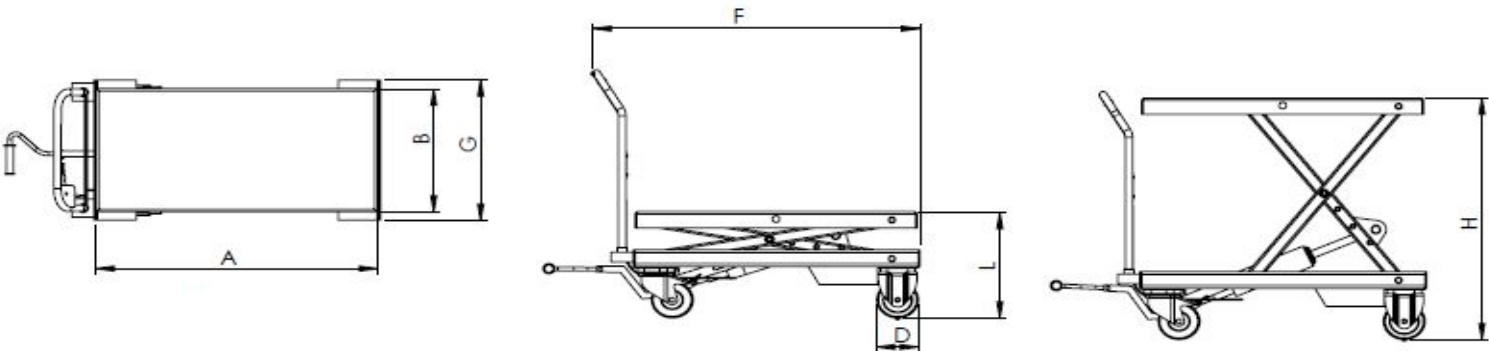
HYDRAULIC PALLET TRUCK				
CAPACITY	Ton	1.5	2.5	4
OVERALL WIDTH	mm	550	680	680
FORK LENGTH	mm	1150	1220	1220
LOWERED FORK HEIGHT	mm	75	85	88
MAX LIFT HEIGHT	mm	190	200	205
FORK WIDTH	mm	150	150	160
OVERALL LENGTH	mm	1520	1520	1545
STEERING WHEEL DIA	mm	φ160	φ200	φ200
FORK WHEEL DIA	mm	φ70×60	φ80×70	φ85×80

Note :- Due to continuous development and improvement specification listed above may be changed without notice.

Hydraulic Scissor Table



Model - HST



Lifts are typically raised and lowered using a hydraulic control valve. This valve is often operated electronically but may be operated manually in primary elevators where the hand-driven mechanism can control the descending speed.

It is manufactured by several hydraulic lifting table manufacturers in the industry. For instance, the Central hydraulics scissor lift table is commonly used in the automotive repair industry for lifting vehicles and light trucks.

We are manufacturing high-quality Portable Hydraulic Scissor Lift Table upto 2 tons capacity which is also known as lifting tables. Light in weight, Compact structure which make handling traveling on work stations more easy and friendly. Heavy-duty Hydraulic cylinder and manual hand pump is fitted which gives maximum stroke length and less hand power.

We are one of the leading Hydraulic Lifting Table Manufacturers in India. It can be used for indoor and outdoor applications. Variable platform sizes and lift height can be provided as per customer need. No installation is required at site, ready to use product.

TECHNICAL SPECIFICATION

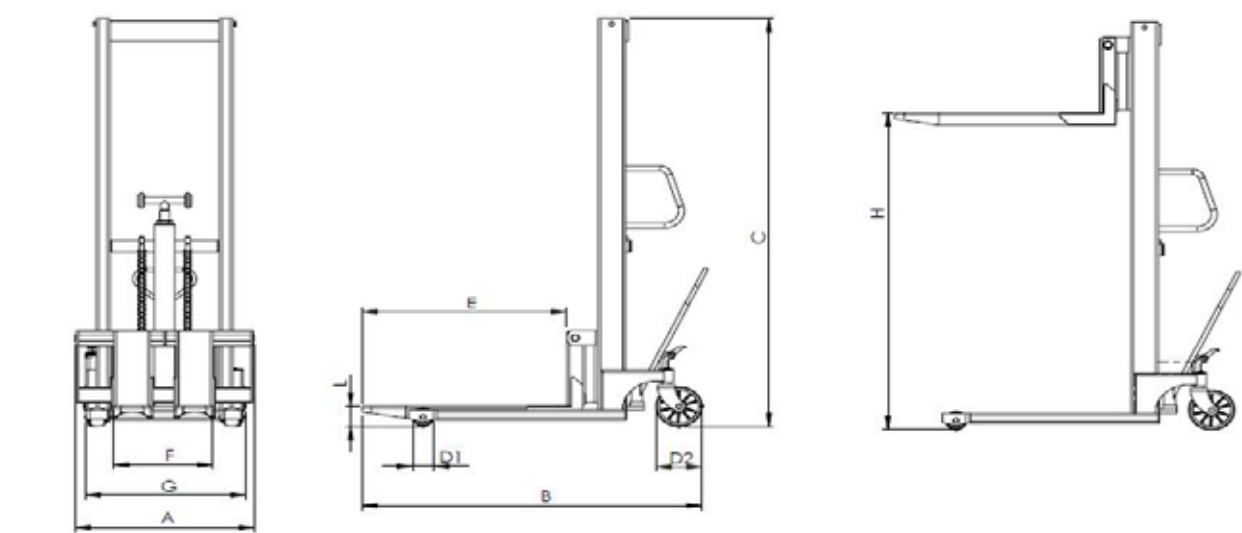
HYDRAULIC SCISSOR TABLE			
Model		HST-1.0	HST-1.5
Capacity	Kg	1000	1500
Maximum Height (H)	mm	1000	1250
Lowered Height (L)	mm	435	450
Platform Size (AxB)	mm	510*1015	600*1200
Wheel Size (D)	mm	Dia 150	Dia 150
Overall Dimensions (GxF)	mm	580*1180	700*1400
Self Wt.	Kg	128	200

Note :- Due to continuous development and improvement specification listed above may be changed without notice.

Hydraulic Hand Stacker



Model - HHS



- Dual operation Hydraulic pump, hand & foot operated.
- Maximum Stroke length/Stroke.
- Maximum height.
- Heavy-duty Polymer Wheels and Bracket assembly for smooth movement
- Safety Guards for operators
- Powder Coated Structure.
- Heavy-duty Hydraulic Cylinder and pump assembly.
- Anti-skid braking arrangement on wheels.
- C — Shaped, sheet metal fabricated columns.
- Quality Stacker Manufacturers in India since 1995.

TECHNICAL SPECIFICATION

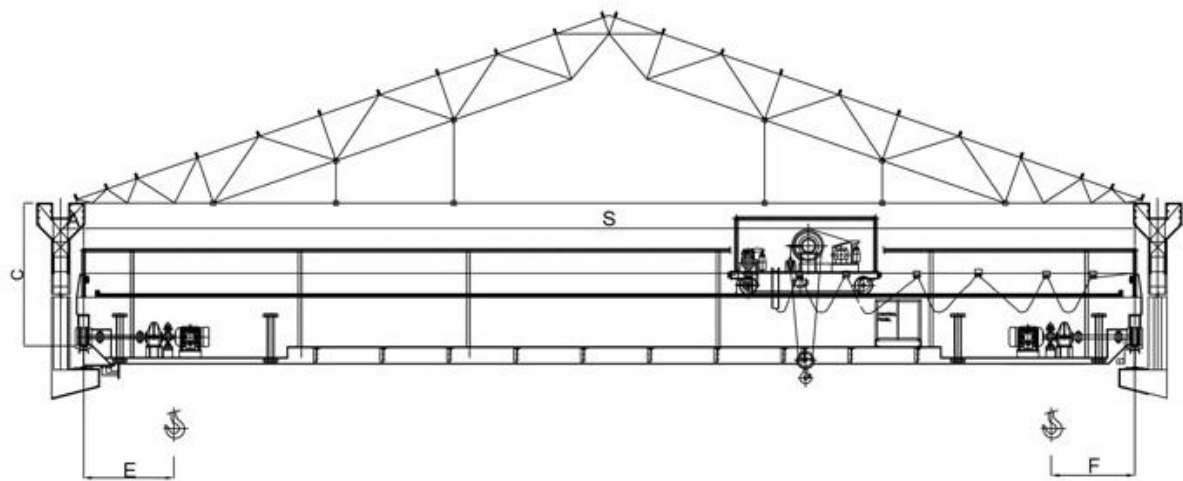
HYDRAULIC HAND STACKER			
Model		HHS - 1.0	HHS-2.0
Capacity	Kg	1000	2000
Max Lifting Height (H)	mm	1600	1500
Lowered Height of Forks (L)	mm	100	100
Fork Length (E)	mm	900	900
Adjustable Width of Forks (F)	mm	230-580	350-750
Lifting Speed	mm/Stroke	20	20
Lowering Speed	mm/Stroke	Controllable	Controllable
Outer Width of Front Legs (G)	mm	650	700
Front wheel Size (D1)	mm	Dia 85*50	Dia 90*70
Rear Wheel Size (D2)	mm	Dia 180*50	Dia 200*50
Overall Size (AxBxC)	mm	750*1420*2040	780x1500x2040
Self Weight	Kg	115	200

Note :- Due to continuous development and improvement specification listed above may be changed without notice.

Double Girder EOT Crane



Confirming to IS - 3177 & 807

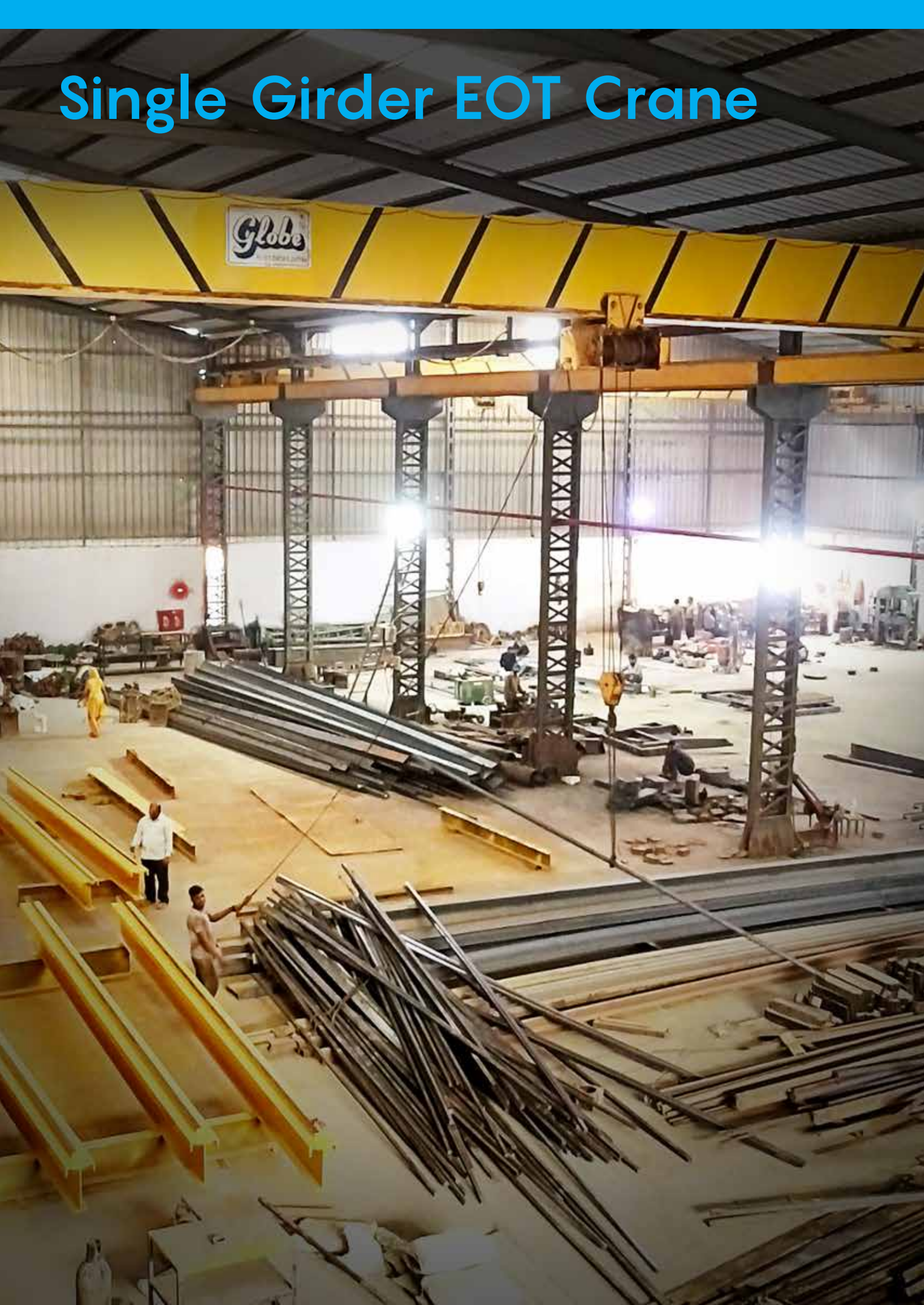


TECHNICAL SPECIFICATION

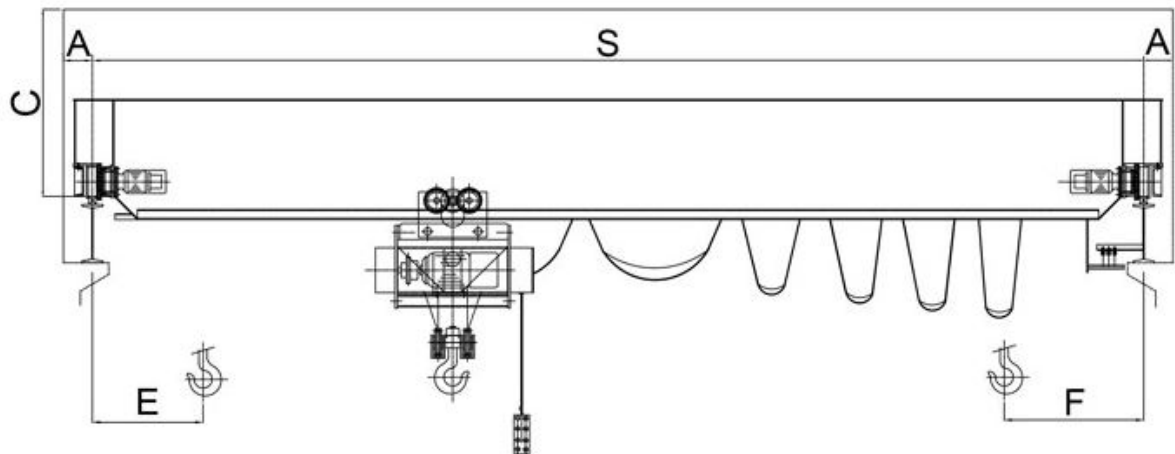
DOUBLE GRINDER EOT CRANE											
MODEL	SWL M.T	SPAN (MTRS) 'S'	HEAD ROOM (MM) 'C'	END CLEARANCE (MM) 'A'	HOOK PPROACHES (MM)'E'	HOOK PPROACHES (MM)'F'	WHEEL BASE (MM) 'W'	GIRDER PROJECTION BELOW RAIL	CRANE WIDTH (MM)	WHEEL LOAD (APPROX) (MT)	CRANE WT. (APPROX) (MT)
GDG-5	5	10	1500	200	900	750	3000	200	3700	5.6	9.4
		15	1600	200	900	750	3000	250	3700	6	11.6
		22	1800	225	1000	800	4400	350	5200	7.4	16
GDG-7.5	7.5	10	1600	200	900	750	3000	250	3700	7.5	11.4
		15	1700	225	900	750	3200	300	4000	8	12.6
		22	1900	250	1000	800	4400	400	5200	9.9	18.4
GDG-10	10	10	1700	250	900	750	3200	300	4000	9.5	13.8
		15	1800	250	1000	800	3400	350	4200	10.1	15.5
		22	1900	250	1000	800	4400	400	5200	11.7	21.5
GDG-15	15	15	2000	250	1100	900	3800	400	4600	14.3	18.8
		22	2200	250	1200	1000	4400	450	5200	16.5	27.2
GDG-20	20	15	2100	275	110	900	4200	400	5300	16.9	20.4
		22	2300	300	1250	1050	4500	450	5800	19.2	28.4
GDG-25	25	15	2100	275	1100	900	4200	400	5300	16.9	20.4
		22	2300	300	1250	1050	4500	450	5800	19.2	28.4
GDG-30	30	15	2500	300	1000	900	4200	450	5400	23.6	25.5
		22	2700	300	1300	1100	4600	500	6000	26.6	37.5
GDG-40	40	15	2900	350	1300	1100	5100	500	6500	28.6	25.5
		22	3100	350	1400	1200	5200	50	6600	33.2	43
GDG-50	50	15	3200	350	1500	1300	5400	50	7000	36.8	34.6
		22	3300	350	1500	1300	5500	600	7500	40.6	49.5
GDG-60	60	18	3800	400	1600	1200	5600	600	7000	49	55
		22	4000	400	1600	1200	5800	650	7500	52	70
GDG-80	80	15	4000	450	1900	1300	5800	650	7200	52	75
		22	4200	450	1950	1350	6000	700	7500	53.5	90
GDG-100	100	15	4200	450	1900	1400	6000	700	7500	58	90
		22	4500	450	1950	1400	6200	750	7800	61	100

Note :- Due to continuous development and improvement specification listed above may be changed without notice.

Single Girder EOT Crane



Confirming to IS - 3177 & 807



TECHNICAL SPECIFICATION

SINGLE GIRDER EOT CRANE								
MODEL	SWL M.T	SPAN (MTRS) 'S'	HEAD ROOM (MM) 'C'	WHEEL BASE (MM)	HOOK APPROACH (MM)E/F	END CLEARANCE (MM) A	WHEEL LOAD PER WHEEL (APPROX)	WEIGHT OF CRANE KGS(APPROX)
GSG-1	1	8	650	1600	700	200	1000	1700
		12	750	2400	700	200	1200	2500
		16	800	3200	700	200	1400	3250
		20	850	4000	700	200	1775	4700
GSG-2	2	8	750	1600	750	200	1600	2000
		12	800	2400	750	200	1850	2900
		16	850	3200	750	200	2000	3800
		20	900	4000	750	200	2400	5200
GSG-3	3	8	800	1600	850	200	2200	2500
		12	850	2400	850	200	2450	3500
		16	900	3200	850	200	2650	4300
		20	1100	4000	850	200	3125	6200
GSG-5	5	8	800	1600	950	250	3400	2900
		12	900	2400	950	250	3725	4200
		16	1000	3200	950	250	4000	5300
		20	1100	4000	950	250	4450	7100
GSG-7.5	7.5	8	850	1600	1000	250	5200	5100
		12	1000	2400	1000	250	5200	5100
		16	1100	3200	1000	250	5650	6700
		20	1200	4000	1000	250	6350	4400
GSG-10	10	8	900	1600	1100	250	6350	4400
		12	1000	2400	1100	250	6750	6000
		16	1200	3200	1100	250	7200	7800
		20	1300	4000	1100	250	7500	9300
GSG-15	15	8	1000	1600	1200	250	9500	6200
		12	1100	2400	1200	250	9850	7600
		16	1250	3200	1200	250	10300	9600
		20	1400	4000	1200	250		

Note :- Due to continuous development and improvement specification listed above may be changed without notice.

GLOBE OVERSEAS PVT. LTD.

Registered Office: B-9, DSIIIDC Engineering Complex,

Mangolpuri Industrial Area, Phase -1, New Delhi — 110083

Ph:- 011-46802215 / 9811628456 | Email id:- goplseas@gmail.com | Web:- www.globeoverseas.org

Works- 1: F-76, Sector — 2, DSIIIDC Industrial Area, Bawana, New Delhi — 110041

Works - 2: Kewat No. 646 Khasra No.178, Beri Kultana Road, Sampla, Distt. Rohtak, Haryana — 124501